

PHOENIX[®] INTERNATIONAL



Home of the Original **DryRod[®]**

portable & stationary electrode ovens ◦ flux & spooled wire ovens ◦ industrial storage containers

Since the 1950s, Phoenix International and the DryRod[®] brand have been a cornerstone of the welding industry. The values of Phoenix International are deeply rooted. We have a long history of integrity, quality and providing welders worldwide with dependable American-made products that contribute to stronger welds.



DryRod® Portable Electrode Ovens

(all operate on 50-60 Hz)



Type 1

- Dual voltage heating element operates between 100-240V while providing consistent oven temperature
- Steady state operation reduces power consumption
- Removable cord secured to oven by locking power inlet allows for easy replacement
- Insulated lid easily secures with latch

Type 2

- Dual voltage heating element operates between 100-240V while providing consistent oven temperature
- Removable cord secured to oven by locking power inlet allows for easy replacement
- Optional digital thermometer

Type 5

- Wire wrapped heating elements provide consistent oven temperature
- Removable cord secured to oven by locking power inlet allows for easy replacement
- Carry handles or wheels and pull handle available
- Optional digital thermometer

Digital Thermometer Kit

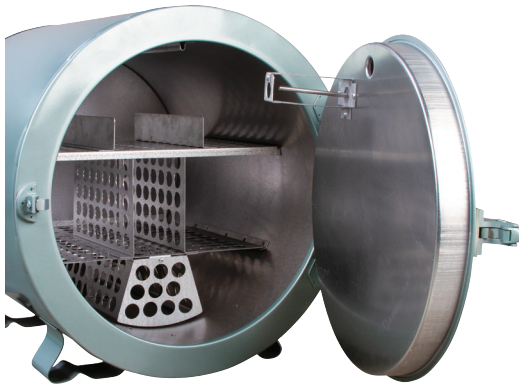
- Works with Type 2, 4, 5, 15 and 15B ovens
- Displays temperature in Celsius or Fahrenheit

Description	Part No.	Capacity	Temperature Range
Portable Ovens without Wheels			
Type 1 , 100-240V AC/DC at 60 watts with indicator light	1205500	10 lb (5 kg)	Preset to 300° F (149° C)
Type 2 , 100-240V AC/DC at 70 watts	1205512	20 lb (9 kg)	100° - 300° F (38° - 149° C)
Type 2 , 100-240V AC/DC at 70 watts with digital thermometer	1205510	20 lb (9 kg)	100° - 300° F (38° - 149° C)
Type 5 , 120/240V AC at 300 watts	1205523	50 lb (25 kg)	100° - 300° F (38° - 149° C)
Type 5 , 120/240V AC at 300 watts with digital thermometer	1205521	50 lb (25 kg)	100° - 300° F (38° - 149° C)
Portable Ovens with Wheels			
Type 5 , 120/240V AC at 300 watts	1205522	50 lb (25 kg)	100° - 300° F (38° - 149° C)
Type 5 , 120/240V AC at 300 watts with digital thermometer	1205520	50 lb (25 kg)	100° - 300° F (38° - 149° C)
Type 15 , 120/240V AC at 600 watts	1205532	150 lb (70 kg)	100° - 300° F (38° - 149° C)
Type 15 , 120/240V AC at 600 watts with digital thermometer	1205530	150 lb (70 kg)	100° - 300° F (38° - 149° C)
Replacement Digital Thermometer			
Digital Thermometer Kit , thermometer and mounting accessories for Type 2, 4, 5, 15 and 15B ovens	1257420	-	-

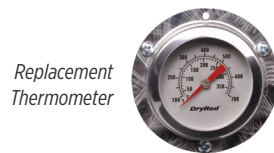
Calibration certificate provided with all ovens and thermometers

DryRod® Stationary Electrode Ovens

(all operate on 50-60 Hz)



Type 300



Replacement Thermometer



Type 15B

- External adjustable thermostat
- Optional digital thermometer

Type 300 and Type 900

- Bench models provide large capacity storage for electrodes
- Door mounted thermometer offered for instant temperature indication
- Adjustable thermostatic control
- Single action door latch easily closes and can be locked
- Shelving provides fit for 50 lb cans

Type 40HT

- Variable high temperature allows rebaking and reconditioning of electrodes
- Programmable controller allows for customized temperature profiles
- Digital temperature display
- Rugged steel construction provides durability in the field

Replacement Thermometer

- Works with Type 300 and 900 ovens
- Mounts in door of oven and certified accurate to +/-10° F

Description	Part No.	Capacity	Temperature Range
-------------	----------	----------	-------------------

Stationary Electrode Ovens

Type 15B, 120/240V AC at 600 watts	1205533	150 lb (70 kg)	100° - 300° F (38° - 149° C)
Type 15B, 120/240V AC at 600 watts with digital thermometer	1205531	150 lb (70 kg)	100° - 300° F (38° - 149° C)
Type 300, 120/240V AC at 1000 watts	1200200	400 lb (182 kg)	100° - 550° F (38° - 288° C)
Type 300, 120/240V AC at 1000 watts with door mounted thermometer	1200201	400 lb (182 kg)	100° - 550° F (38° - 288° C)
Type 300, 240/480V AC at 1000 watts	1200100	400 lb (182 kg)	100° - 550° F (38° - 288° C)
Type 300, 240/480V AC at 1000 watts with door mounted thermometer	1200101	400 lb (182 kg)	100° - 550° F (38° - 288° C)
Type 900, 240/480V AC at 2400 watts	1200300	1100 lb (500 kg)	100° - 550° F (38° - 288° C)
Type 900, 240/480V AC at 2400 watts with door mounted thermometer	1200301	1100 lb (500 kg)	100° - 550° F (38° - 288° C)

Stackable Stationary Electrode Ovens

Type 300, 120/240V AC at 1000 watts with stacking lugs	1200202	400 lb (182 kg)	100° - 550° F (38° - 288° C)
Type 300, 120/240V AC at 1000 watts with door mounted thermometer and stacking lugs	1200203	400 lb (182 kg)	100° - 550° F (38° - 288° C)
Type 300, 240/480V AC at 1000 watts with stacking lugs	1200102	400 lb (182 kg)	100° - 550° F (38° - 288° C)
Type 300, 240/480V AC at 1000 watts with door mounted thermometer and stacking lugs	1200103	400 lb (182 kg)	100° - 550° F (38° - 288° C)

High Temperature Stationary Electrode Ovens

Type 40HT, 1/50/60/240V AC at 4500 watts	1204402	400 lb (182 kg)	100° - 800° F (38° - 427° C)
Type 40HT, 3/50/60/480V AC at 4500 watts	1204400	400 lb (182 kg)	100° - 800° F (38° - 427° C)
Type 200HT, 120/240V AC at 1000 watts with door mounted thermometer	1200461	200 lb (90 kg)	100° - 660° F (38° - 350° C)
Type 300HT, 120/240V AC at 1500 watts	1200160	400 lb (182 kg)	100° - 660° F (38° - 349° C)
Type 300HT, 120/240V AC at 1500 watts with door mounted thermometer	1200161	400 lb (182 kg)	100° - 660° F (38° - 349° C)
Type 900HT, 240V AC at 4000 watts	1200360	1100 lb (500 kg)	100° - 660° F (38° - 349° C)
Type 900HT, 240V AC at 4000 watts with door mounted thermometer	1200361	1100 lb (500 kg)	100° - 660° F (38° - 349° C)

Replacement Door Thermometer

Replacement Thermometer Kit, thermometer and mounting accessories for Type 300, 900 and 200HT ovens	1250300	-	-
---	---------	---	---

Calibration certificate provided with all ovens and thermometers



DryRod® Flux Holding & Rebaking Ovens



Description	Part No.	Capacity	Temperature Range
Flux Holding & Rebaking Ovens			
Type 100FX , 120V AC at 1000 watts	1201902	150 lb (68 kg)	100° - 350° F (38° - 177° C)
Type 100FX , 240V AC at 1000 watts	1201906	150 lb (68 kg)	100° - 350° F (38° - 177° C)
Type 950FX , 3/240V AC at 3000 watts	1200605	600 lb (272 kg)	100° - 450° F (38° - 232° C)
Type 950FX , 3/480V AC at 3000 watts	1200604	600 lb (272 kg)	100° - 450° F (38° - 232° C)
Type 750HT , 3/60/240V AC at 6000 watts	1201802	680 lb (308 kg)	100° - 800° F (38° - 427° C)
Type 750HT , 3/60/480V AC at 6000 watts	1201801	680 lb (308 kg)	100° - 800° F (38° - 427° C)

Type 100FX

- Adjustable thermostatic control
- Wheels for ease of movement

Type 950FX

- Adjustable thermostatic control
- Dispensing gate valve enables easy handling of hot flux

Type 750HT

- Variable high temperature allows for rebaking and reconditioning of flux
- Programmable temperature profile with digital display



Spooled Wire Ovens

Description	Part No.	Capacity	Temperature Range
Spooled Wire Ovens			
Type 4 , 120/240V AC at 1000 watts with digital thermometer	1205438	Up to four 12 inch spools or three 16 inch coils	100° - 300° F (38° - 150° C)
Type 24 , 240/480V AC at 2500 watts	1205430	Up to (24) 12 inch spools or (16) 16 inch coils	100° - 550° F (38° - 288° C)
Type 24 , 240/480V AC at 2500 watts with door mounted thermometer	1205431	Up to (24) 12 inch spools or (16) 16 inch coils	100° - 550° F (38° - 288° C)



Type 4 & Type 24

- Designed for flux cored wire and general purpose storage
- Type 24 provides adjustable shelving to accommodate different spool sizes
- Thermometer option available



Industrial Storage Containers

Description	Part No.	Capacity	Temperature Range
Industrial Storage Containers			
14 inch (35.6 cm) storage container (case of 12)	1205441	up to 10 lb (4.5 kg) 14 inch (35.6 cm) stick	accepts rods heated up to 250° F (121° C)
18 inch (45.7 cm) storage container (case of 12)	1205455	up to 15 lb (6.8 kg) 18 inch (45.7 cm) stick	accepts rods heated up to 250° F (121° C)
Carrying strap (case of 12)	1205451	for use with 14 and 18 inch ST models	-
40 inch (91.4 cm) TIG rod storage container	1205488	up to 10 lb (4.5 kg) of 36 inch (91.4 cm) stick	accepts rods heated up to 250° F (121° C)
Wall storage rack for 14 inch (35.6 cm) and 18 inch (45.7 cm) storage container	1205666	stores three 14 or 18 inch storage containers	-
Wall storage rack for 40 inch (91.4 cm) TIG rod storage container	1205490	stores four 40 inch TIG rod storage containers	-



Safetubes

- Only ¼ turn for positive seal
- Shape prevents rolling
- Highly visible color
- Pressure fitted, protected o-ring

