

INDUSTRIAL MARKING PRODUCTS

www.industrialmarking.com



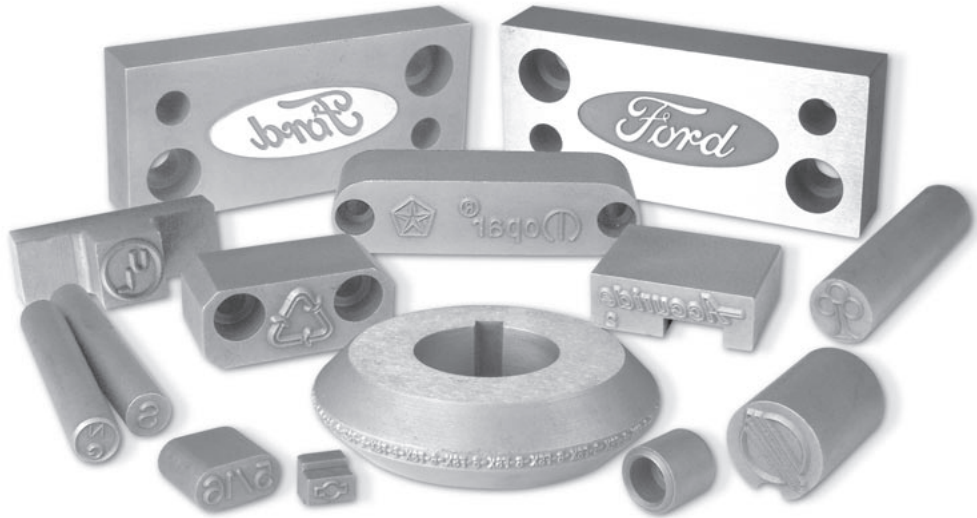
STEEL STAMPS
CUSTOM ENGRAVING
MARKING MACHINES

1415 Grovenburg Road
Holt, MI 48842

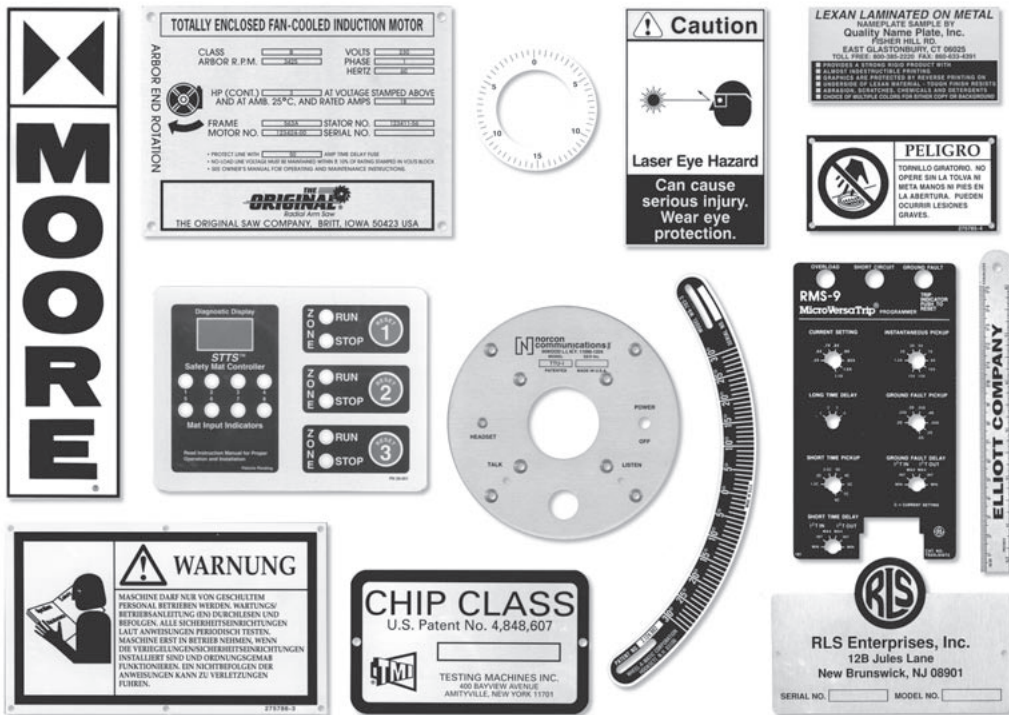
(517) 699-2160 phone
(517) 699-1505 fax

CUSTOM STEEL STAMPS & DATA PLATES

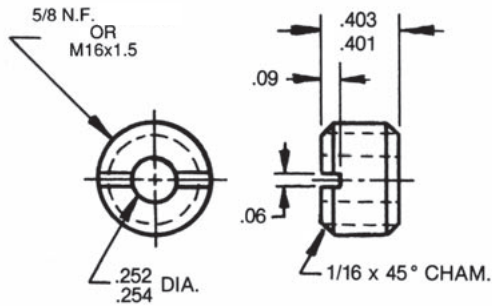
Custom engraved stamps can be quoted for you the same day. If rush delivery is required, we will do whatever possible to meet those needs.



Custom Data Plates can be made per your specs. . . For a prompt quote just send us a print with size, material and quantity required.

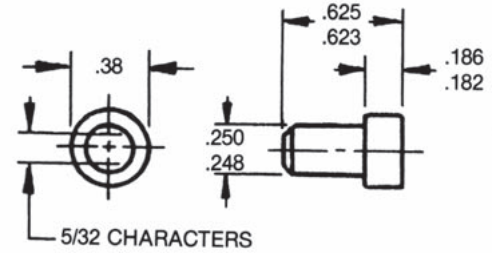


BOTTOMING STAMPS & RETAINERS



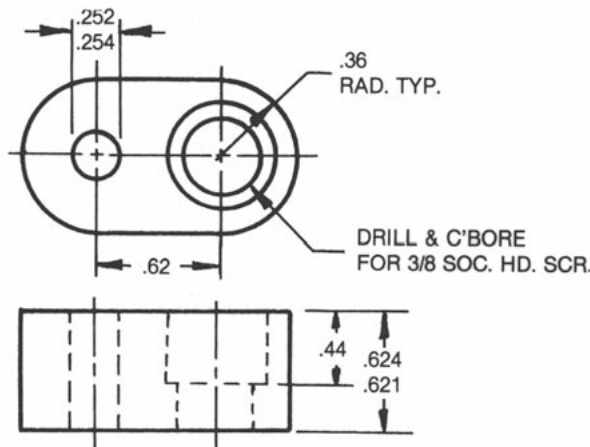
IMP-104 RETAINER

Used with IMP-105 Stamp



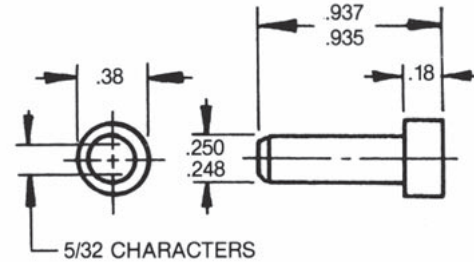
IMP-105 STAMP

Available in Letters and Numbers



IMP-201 RETAINER

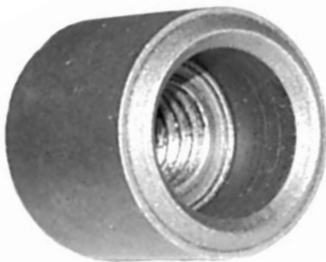
Used with IMP-202 Stamp



IMP-202 STAMP

Available in Letters and Numbers

Marker Description

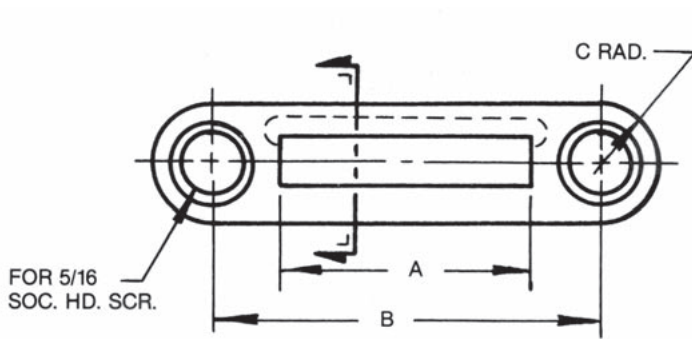


Chrysler Part Numbers	Body Diameter	Body Length	Circle Impression
21-750-0018	12 mm	16 mm	10 mm
21-750-0028	15 mm	16 mm	13 mm
21-750-0038	18 mm	16 mm	16 mm
21-750-0048	21 mm	16 mm	19 mm
21-750-0058	24 mm	16 mm	22 mm
21-930-0137	13 mm	16 mm	11 mm
FS-424	13 mm	16 mm	11 mm

General Motors Part Numbers	Body Diameter	Body Length	Circle Impression
MF-20135	5/8"	5/8"	1/2"
M-1470	16 mm	16 mm	13 mm

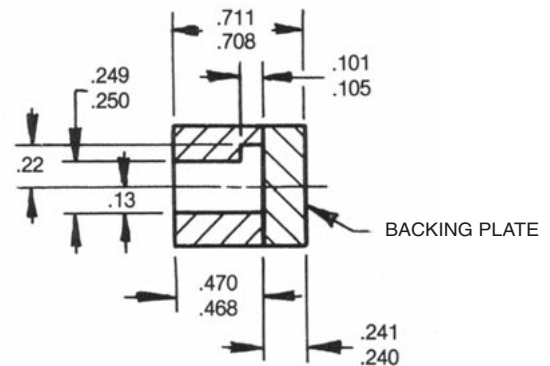
Ford Motor Co. Part Numbers	Body Diameter	Body Length	Circle Impression
WDX20-70-0501	13 mm	16 mm	11 mm

STANDARD STAMPS & RETAINERS



IMP-101 RETAINER

Holds (7) IMP-103 Stamps or
(8) IMP-164 Stamps
A=1.31 B=2.00 C=.31
Used with **IMP-102 Backing Plate**

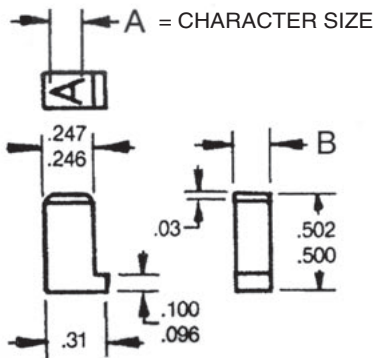


IMP-510 RETAINER

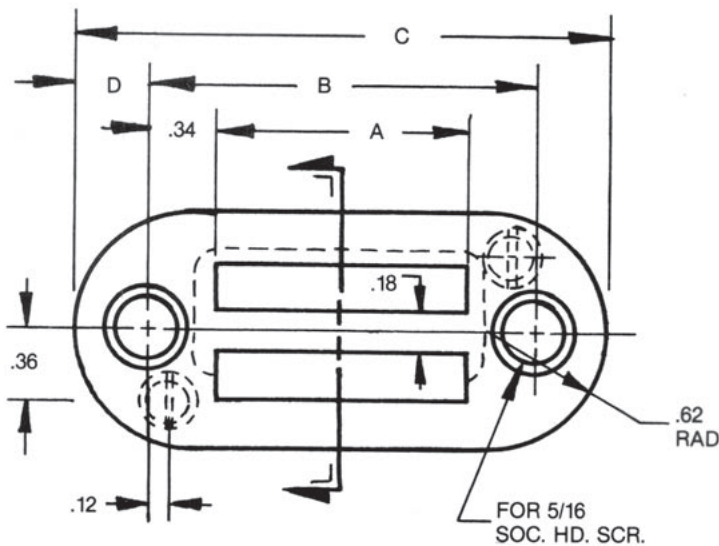
Holds (10) IMP-164 Stamps
A=1.64 B=2.31 C=.31
Used with **IMP-511 Backing Plate**

IMP-412 RETAINER

Holds (12) IMP-103 Stamps
A=2.25 B=2.94 C=.38
Used with **IMP-412 Backing Plate**

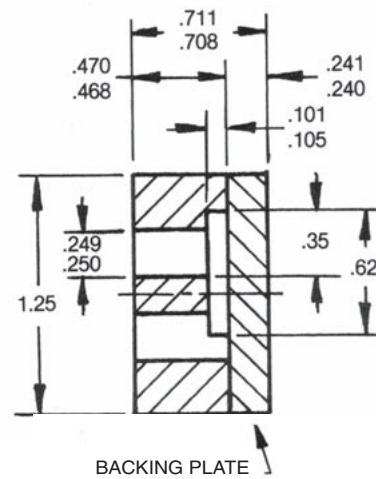


Part No.	A	B
IMP-103 STAMP	5/32"	.187
IMP-164 STAMP	5/32"	.164
IMP-518 STAMP	3/16"	.164
IMP-512 STAMP	1/8"	.164
IMP-125 STAMP	1/8"	.125



IMP-106 RETAINER

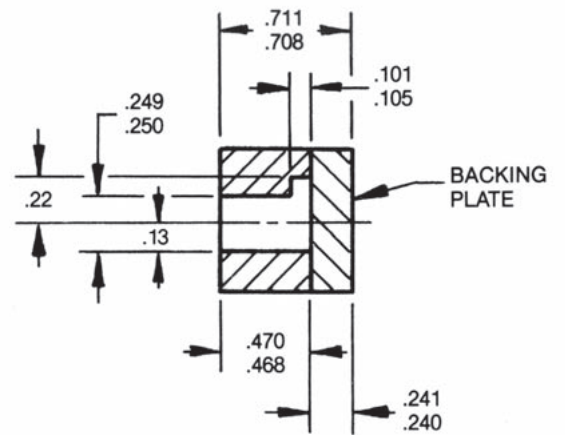
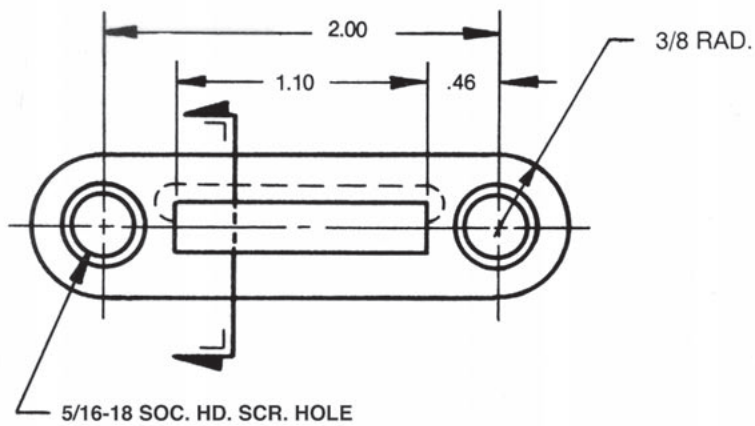
Holds (14) IMP-103 Stamps or
(16) IMP-164 Stamps
A=1.32 B=2.00 C=2.75 D=.38
Used with **IMP-107 Backing Plate**



IMP-520 RETAINER

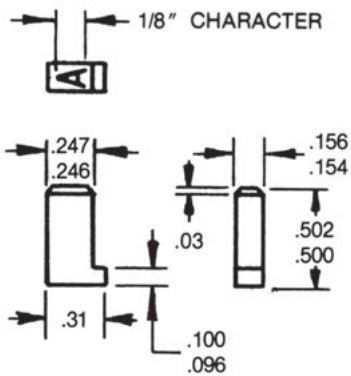
Holds (20) IMP-164 Stamps
A=1.64 B=2.31 C=2.94 D=.31
Used with **IMP-521 Backing Plate**

STANDARD STAMPS & RETAINERS



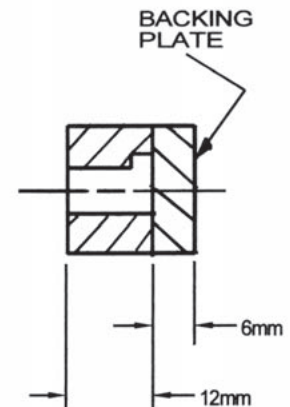
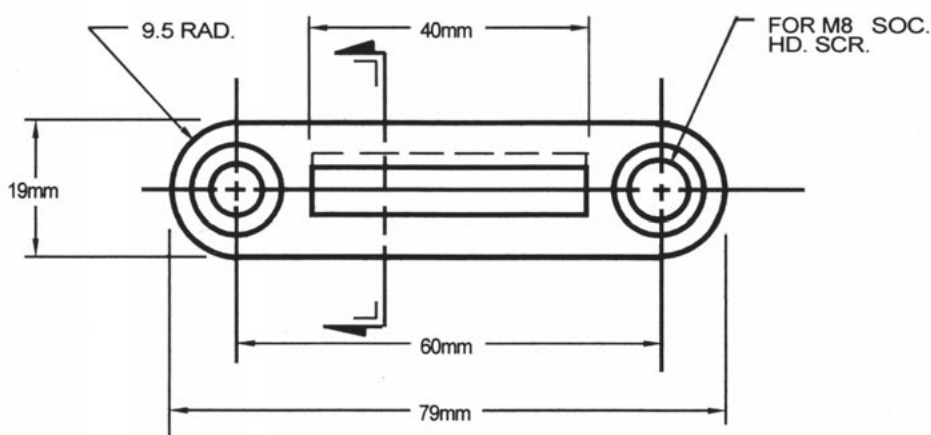
RN - 1/8 RETAINER

Holds (7) RN-1/8 Stamps
Used with RN-1 / 8 Backing Plate



RN 1/8 STAMP

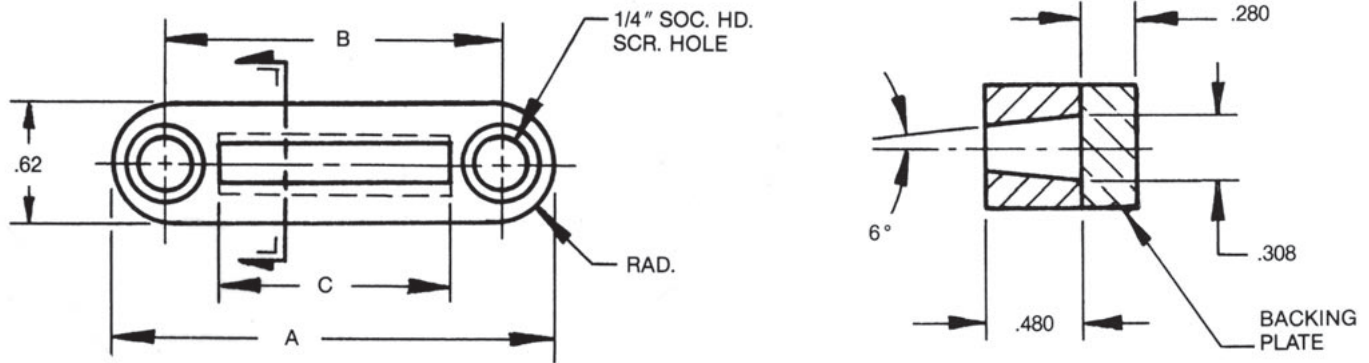
1/8" Character
Fits Chrysler Retainers



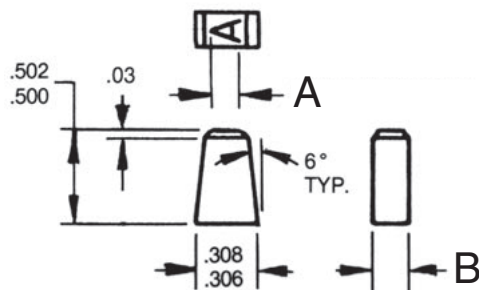
CHRYSLER NO. 55-506-0442

Holds (10) RN 1/8 Stamps

STANDARD STAMPS & RETAINERS



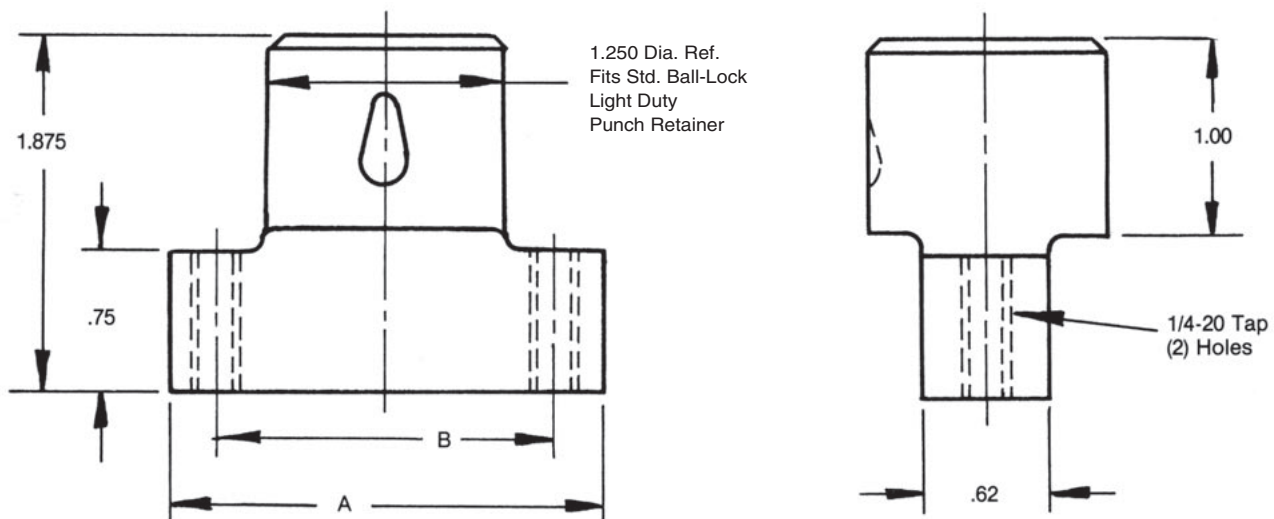
IMP NO.	DESCRIPTION	"A" Dim.	"B" Dim.	"C" Dim.
MR-3	holds 3 IMP-180's or 6 IMP-090's	1.50	1.00	.562
MR-5	holds 5 IMP-180's or 10 IMP-090's	1.88	1.38	.936
MR-7	holds 7 IMP-180's or 14 IMP-090's	2.25	1.75	1.310
MR-9	holds 9 IMP-180's or 18 IMP-090's	2.75	2.25	1.683



IMP-180 STAMP
 1/8" Character height
 A=1/8"
 B=.183/.185

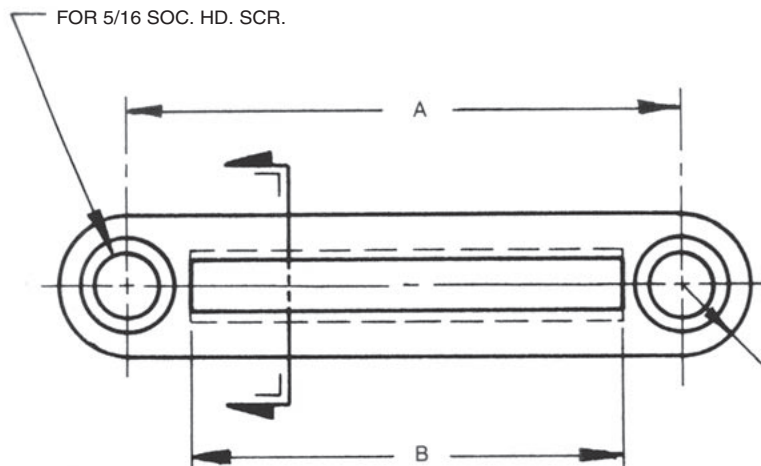
IMP-090 STAMP
 3/32" Character height
 A=3/32"
 B=.090/.092

Marker Retainer Punch - Quick Change Type



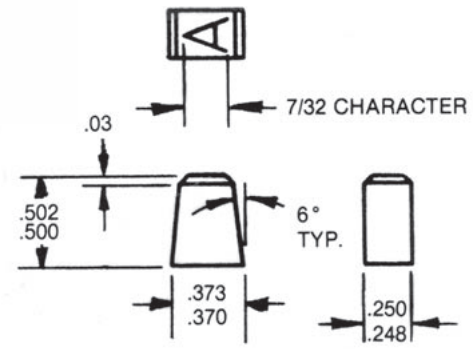
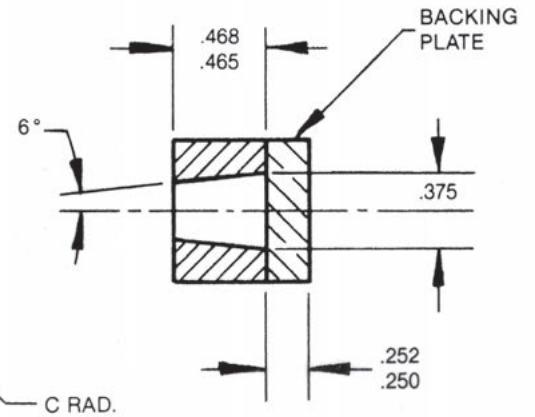
IMP NO.	"A" Dim.	"B" Dim.	FOR RET. NO.
MRP-3	1.62	1.00	MR-3
MRP-5	2.00	1.38	MR-5
MRP-7	2.25	1.75	MR-7
MRP-9	2.75	2.25	MR-9

STANDARD STAMPS & RETAINERS

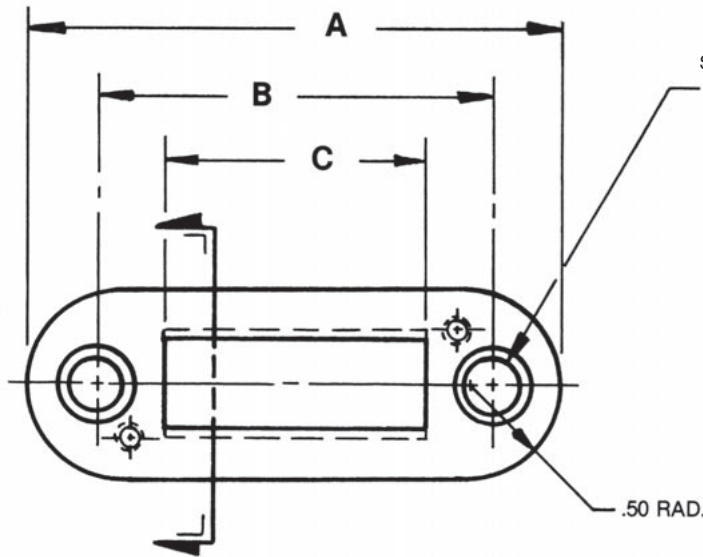


MR-50 RETAINER SET
 Holds (5) IMP-250 Stamps
 A=1.81 B=1.25 C=.31

MR-54 RETAINER SET
 Holds (9) IMP-250 Stamps
 A=2.88 B=2.26 C=.38

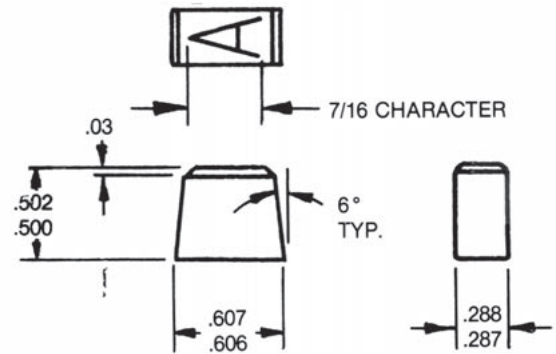
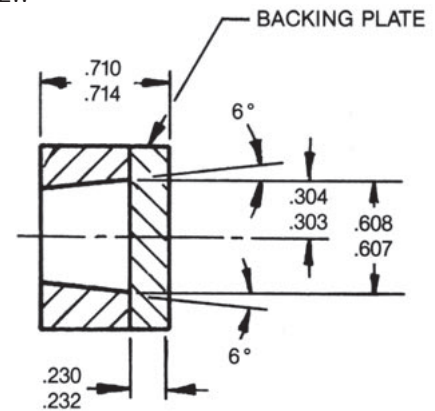


IMP-250 STAMP
 Fits Retainers MR-50, MR-54



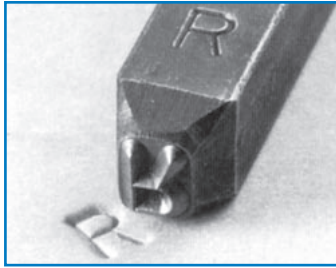
IMP-301 RETAINER SET
 Holds (5) IMP-310 Wedge Type Stamps
 A=2.94 B=2.00 C=1.44

FOR 5/16 DIA
 SOC. HD. SCREW

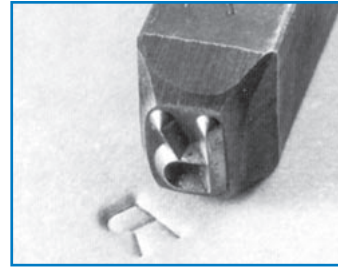


IMP-310 STAMP
 Fits IMP-301 Retainer

GRUV-GRIP HAND STAMPS



Heavy Duty



Reversed

Letter Sets (27 Characters)

Item Code	Size In.	Size mm.	Wt. Lbs.	Size of Steel	
				Sq.	Length
00273	1/32	0.8	1-1/2	1/4	2-3/8
01273	1/16	1.6	1-1/2	1/4	2-3/8
02273	3/32	2.4	2-1/4	5/16	2-1/2
03273	1/8	3.2	2-1/4	5/16	2-1/2
04273	5/32	4.0	3	3/8	2-3/4
05273	3/16	4.8	3	3/8	2-3/4
06273	1/4	6.4	4-1/2	7/16	3
07273	5/16	7.9	6	1/2	3
08273	3/8	9.5	8	9/16	3-1/8
09273	1/2	12.7	18-1/2	3/4	3-3/4
10273	5/8	15.9	25	7/8	3-3/4

Letter Sets (27 Characters)

Item Code	Size In.	Size mm.	Wt. Lbs.	Size of Steel	
				Sq.	Length
00274	1/32	0.8	1-1/2	1/4	2-3/8
01274	1/16	1.6	1-1/2	1/4	2-3/8
02274	3/32	2.4	2-1/4	5/16	2-1/2
03274	1/8	3.2	2-1/4	5/16	2-1/2
04274	5/32	4.0	3	3/8	2-3/4
05274	3/16	4.8	3	3/8	2-3/4
06274	1/4	6.4	4-1/2	7/16	3
07274	5/16	7.9	6	1/2	3
08274	3/8	9.5	8	9/16	3-1/8
09274	1/2	12.7	10-3/4	5/8	3-3/8

Number Sets (9 Characters)

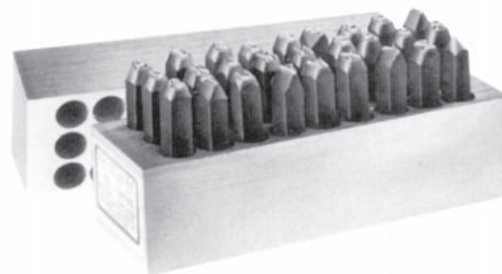
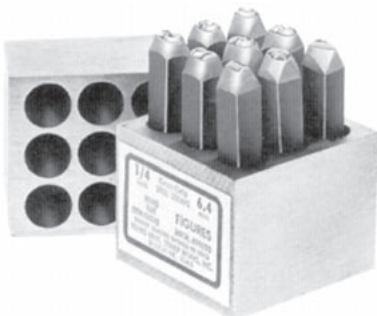
Item Code	Size In.	Size mm.	Wt. Lbs.	Size of Steel	
				Sq.	Length
00093	1/32	0.8	1/2	1/4	2-3/8
01093	1/16	1.6	1/2	1/4	2-3/8
02093	3/32	2.4	3/4	5/16	2-1/2
03093	1/8	3.2	3/4	5/16	2-1/2
04093	5/32	4.0	1	3/8	2-3/4
05093	3/16	4.8	1	3/8	2-3/4
06093	1/4	6.4	1-1/2	7/16	3
07093	5/16	7.9	2	1/2	3
08093	3/8	9.5	2-1/2	9/16	3-1/8
09093	1/2	12.7	6-3/4	3/4	3-3/4
10093	5/8	15.9	8	7/8	3-3/4

Number Sets (9 Characters)

Item Code	Size In.	Size mm.	Wt. Lbs.	Size of Steel	
				Sq.	Length
00094	1/32	0.8	1/2	1/4	2-3/8
01094	1/16	1.6	1/2	1/4	2-3/8
02094	3/32	2.4	3/4	5/16	2-1/2
03094	1/8	3.2	3/4	5/16	2-1/2
04094	5/32	4.0	1	3/8	2-3/4
05094	3/16	4.8	1	3/8	2-3/4
06094	1/4	6.4	1-1/2	7/16	3
07094	5/16	7.9	2	1/2	3
08094	3/8	9.5	2-1/2	9/16	3-1/8
09094	1/2	12.7	4-3/4	5/8	3-3/8

Single Heavy-Duty pieces can be purchased separately

Single Reversed pieces can be purchased separately



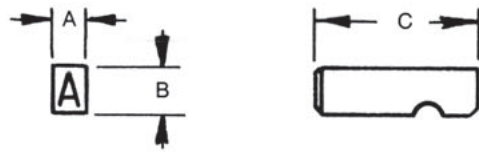
INTERCHANGEABLE TYPE

STYLE F



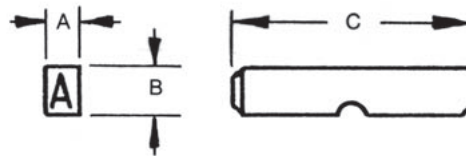
Char. Size	A	B	C	Catalog No.
1/32	1/16	1/8	7/8	F03N
1/16	1/16	1/8		F06N
3/32	3/32	3/16		F09N
1/32	1/16	1/4		F03
1/16	1/16	1/4		F06
3/32	3/32	1/4		F09
1/8	1/8	1/4		F13
5/32	3/16	5/16		F16
3/16	3/16	5/16		F19
1/4	1/4	3/8		F25
5/16	5/16	7/16	1	F31
3/8	3/8	1/2		F38

STYLE G



Char. Size	A	B	C	Catalog No.
1/32	1/16	1/4	7/8	G03
1/16	1/16	1/4		G06
3/32	3/32	1/4		G09
1/8	1/8	1/4		G13
5/32	5/32	1/4		G16N
5/32	3/16	1/4		G16
5/32	3/16	5/16		G16W
3/16	3/16	5/16		G19
1/4	1/4	3/8		G25
5/16	5/16	7/16		1
3/8	3/8	1/2	G38	

STYLE C

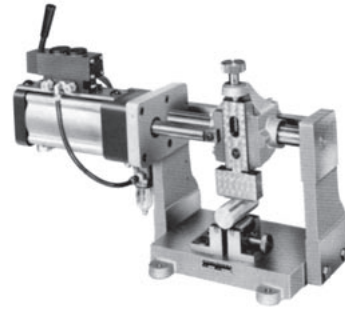


Char. Size	A	B	C	Catalog No.
1/32	1/16	1/4	1-1/4	C03
1/16	1/16	1/4		C06
3/32	3/32	1/4		C09
1/8	1/8	1/4		C13
5/32	3/16	5/16		C16
3/16	3/16	5/16		C19
1/4	1/4	3/8		C25
5/16	5/16	7/16		C31
3/8	3/8	1/2		C38

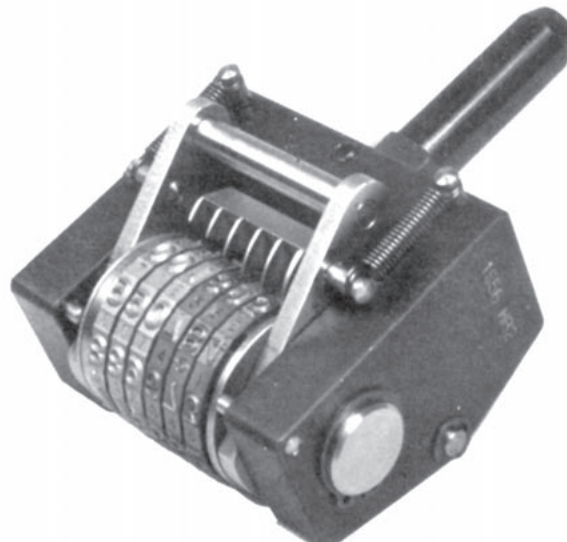
MARKING MACHINES



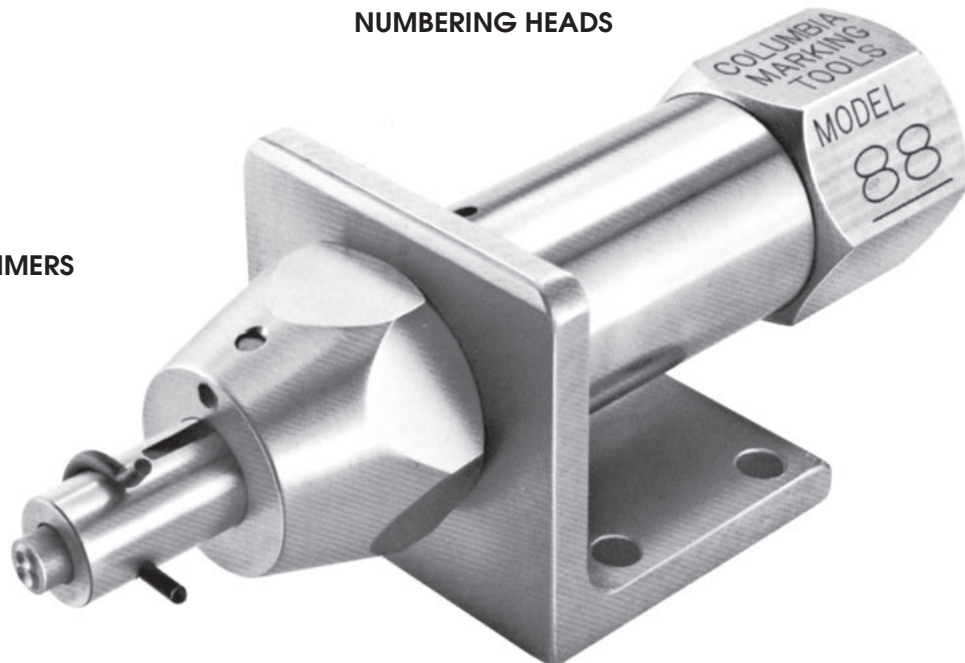
**PNEUMATIC AND MANUAL
IMPACT PRESSES**



**PNEUMATIC AND MANUAL
ROLL MARKING MACHINES**

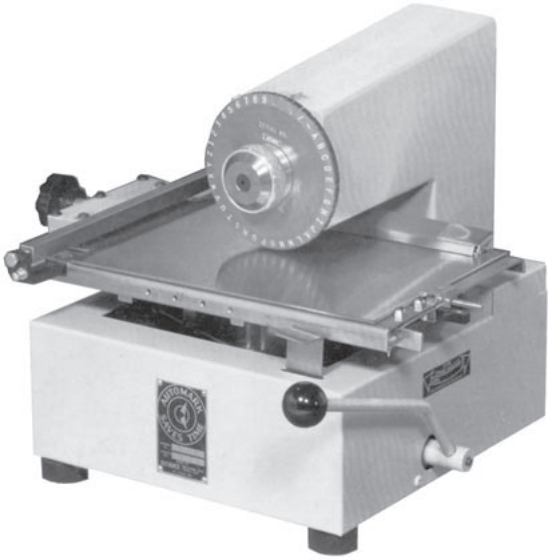


**MANUAL AND AUTOMATIC
NUMBERING HEADS**



AIR IMPACT HAMMERS

MARKING MACHINES



MANUAL DATA PLATE MARKING MACHINES

ELECTRIC DATA PLATE MARKING MACHINES



EMBOSSING MACHINES FOR METAL OR PLASTIC



BRANDING EQUIPMENT

